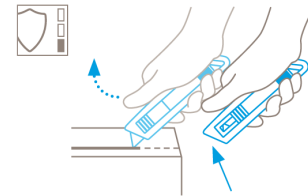


DESCRIZIONE: **Cutter di sicurezza - Antinfortunistici**

CODICE: **C 5299 9000**

**SECUNORM PROFI**  
NO. 07152

**Safety technology**



**Automatic blade retraction – a high degree of safety**

The automatic blade retraction of the SECUNORM PROFI guarantees a high degree of safety from cut injuries. As soon as you have started to cut, take your thumb off the slider. The blade can thus withdraw back into the handle immediately after leaving the material being cut.



**SAFETY KNIFE WITH AUTOMATIC BLADE RETRACTION DESIGNED FOR ALL NORMAL CUTTING JOBS.**

Order No. 07152.02

**A classic for right handed users. With trapezoid blade.**

Do you sometimes wonder why we've never bothered to update our SECUNORM PROFI? It is, after all four decades old! Well to be honest, it's never been necessary. Yesterday's pioneer is today's classic. A timeless shape, a robust form, a versatile ability: what more could you want? The „forefather“ of all of our TÜV-tested safety cutters, the SECUNORM PROFI features automatic blade retraction and has therewith protected generations of users.

**Ergonomic handle.**

Why the SECUNORM PROFI has been so popular for as long as we know? Because, for one, it sits comfortably and valuably in your hand. You can thus complete even demanding cutting work without any fatigue.

**Hard to take up**

The plastic insert of the SECUNORM PROFI is inside an aluminium handle. The stable design makes it ideal for high cutting frequencies and a long life.

**2-cutting edge blade**

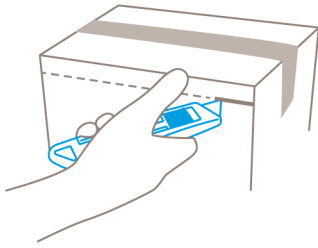
Before you have to change the quality blade, you can turn it over once. This doubles the usage time of the blade - and reduces your energy consumption. Because your product will cut again like new.

**Without tools.**

You can kiss goodbye to complex blade changes. In the truest sense of the word. You only have to push the plastic insert out of the handle and exchange the old blade for a new one.

**Safe fit**

A SECUNORM PROFI will not let you down. But it can be hung down! Just pull the strap through the eyelet and let the cutting tool hang from your wrist or belt loop.



## PRODUCT FEATURES

### Technical features



High safety



Tool-less blade change



Very abrasion resistant



Very ergonomic



2-times usable blade



Extended blade length



Cutting depth



For right hander



Lanyard hole



Printable for promotional purposes

### Main cutting materials



Cardboard: up to 3-ply



Wrapping, stretch, and shrink foil



Plastic strapping band



Tape



Bagged goods

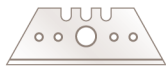


Layers of foil or paper



Yarn, cord

### Installed blade



**NO. 5232**

0.63 mm, deep-edged

### Optional blade



**NO. 52**

0.63 mm



**NO. 610**

0.63 mm, stainless



**NO. 852**

0.63 mm, stainless, TiN-coated



**NO. 5233**

0.63 mm, single bevel edge-ground



**NO. 65232**

0.63 mm, deep-edged with dull tips



**NO. 8852**

0.63 mm, alloyed carbon steel TiN-coated



**NO. 60**

0.63 mm



**NO. 56**

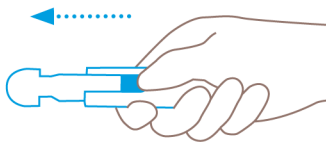
0.63 mm



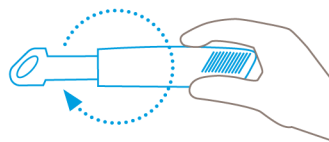
**NO. 5634**

0.63 mm, blunt-ended

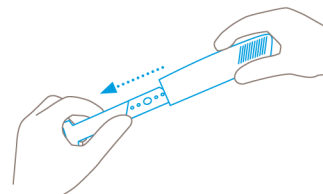
## BLADE CHANGE



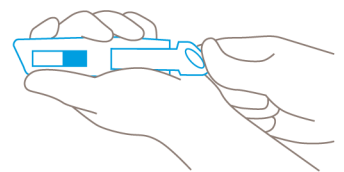
use the slider to push the plastic insert back and out of the handle. Don't pull the insert while holding onto the slider.



Turn the knife through 180°.



Pull the central mechanism in the direction of the arrow. Keep hold of the blade with your thumb. Reverse or replace the blade and re-install the plastic insert. Make sure you position the new or turned blade exactly over the locating lug.



Never hold your hand in front of the blade exit while pushing the slider mechanism back into the handle!



Safety poster



Training video



Technical data sheet



Consulting service

## PRODUCT AND PACKAGING DETAILS

<b>Order No.</b>	NO. 07152.02	<b>Packaging unit</b>	1 in single unit box
<b>Knife size (L x W x H)</b>	142 x 16 x 31 mm	<b>Size Single unit box</b>	154 x 22 x 38 mm
<b>Weight knife</b>	83.5 g	<b>Weight single unit box</b>	96 g
<b>Main material</b>	Aluminium	<b>EAN Code single unit box</b>	4002632900396
<b>Extended blade length</b>	21 mm	<b>Quantity in outer pack</b>	10 knives
<b>Cutting depth</b>	19.6 mm	<b>Size outer pack</b>	115 x 80 x 160 mm
		<b>Weight outer pack</b>	987 g
		<b>EAN Code outer pack</b>	4002632951718
		<b>Customs tariff number</b>	82119300

## SAFETY CERTIFICATE

<b>Date of issue</b>	27.08.2010
<b>Certificate</b>	GS certificate NO. S 60033010

## Certificates and awards



## SECURITY ADVICE

To ensure that you use your new MARTOR knife safely and most effectively, please read and note the following user-instructions. Please keep the written guide in a safe place so that you can access it at any time.

**1. General application instructions:** Please use the product carefully for cutting work only and not for any purposes other than those that are intended. Please take the correct handling and the proper use of the knives into account in this regard.

**2. Special application instructions to avoid the danger of injuries:** Only use knives that are in perfect condition and have sharp, clean and undamaged blades. employ the utmost care when handling the knives.

**CAUTION:** The blade is sharp and can result in serious and deep cuts. Therefore, never reach into the blade! To reduce the danger of injuries, hold the hand that is being used to restrain and stabilise the cutting base in such a manner that the restraining hand or even other body parts are not endangered in the event that the knife slips.

**3. Replacement of spare parts:** Replace any blades that become dull at the right time! Use only the replacement blades available at MARTOR for this purpose. Dispose of old blades in a proper fashion. They should not be placed in a waste paper bin, as this poses a considerable danger of injuries. Never

perform any repairs yourself. If the knife displays signs of aging or other wear, e.g. function problems when changing the blade or in the handling of the blade pushers, then it must be rejected and replaced with a new one. Any modifications or manipulations to the product are prohibited, as they impair the product safety. **CAUTION:** There is an extremely high danger of injuries here!

**4. Non-use of the knife:** Always secure the blade in such a way that injuries due to cuts are excluded. Store the knife in a secure place.

**5. Care instructions:** Always keep the knife clean and do not expose it to unnecessary humidity to safeguard a long service life.

**CAUTION:** No liability will be assumed for consequential losses. Subject to technical changes and errors! This knife does not belong in the hands of children!

### BELT HOLSTER

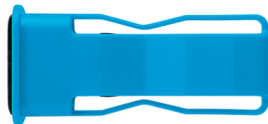
NO. 9829



A belt holster is an ideal place to stow your safety cutter. You can attach this BELT HOLSTER either directly to your belt, or to your clothing using a clip. In this way, you can keep your cutting tool close to your side at all times.

### HOLSTER

NO. 9842



This blue plastic HOLSTER is just like the black version, only smaller. Use it to safely store and transport SECUNORM cutters MULTISAFE, MULTISSET, PROFI, PROFI LIGHT, PROFI25 and PROFI40. With this holster on your hip, your cutter will always be within grasping range.

### USED BLADE CONTAINER

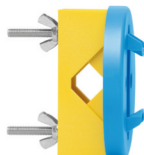
NO. 9810



You can fill the USED BLADE CONTAINER with the content of your SAFEBOX. Or directly with your used blades. When the box is full, turn the lid until it shuts. Now the box cannot be reopened. The next step is to safely and completely dispose of the filled USED BLADE CONTAINER.

### WALL MOUNT BRACKET USED BLADE CONTAINER

NO. 9845



Include it in your order now! With this mounting bracket you can fix your USED BLADE CONTAINER to a central location. Use the clamp and screws and nuts supplied with the product to attach it to either a pipe or a rod.

### SAFEBOX

NO. 108000



The SAFEBOX is large enough to store a large number of used blades safely. And at the same time, it is compact enough to carry on you. The two slits are not only used for filling, but also to „shorten“ your snap-off blades. When your SAFEBOX is full, empty it into your USED BLADE CONTAINER.

### SAFETY DEVICE

NO. 9800



You can attach a U-shaped safety device to all SECUNORM PROFI cutters to prohibit blade change. When in place, the safety device can only be removed by leverage with a tool. The device works by disabling retraction of the plastic insert. Effectively hindering unqualified access to the blade.

### POCKET CLIP

NO. 9853



The pocket clip fits all right handed SECUNORM PROFI cutters. Just push the clip through the eyelet at the end of the handle. Use it to attach your cutter to your trouser pocket, for example.